



CQD15S

Electric Stand-up Reach Truck 1.5t

- Best Choice for Stacking in Narrow Aisles & High Racking;
- Stand-on Operation Provides Broader View;
- Electric Power Steering Control, Comfortable and Efficient;
- None-floating drive system, solid stable in high position

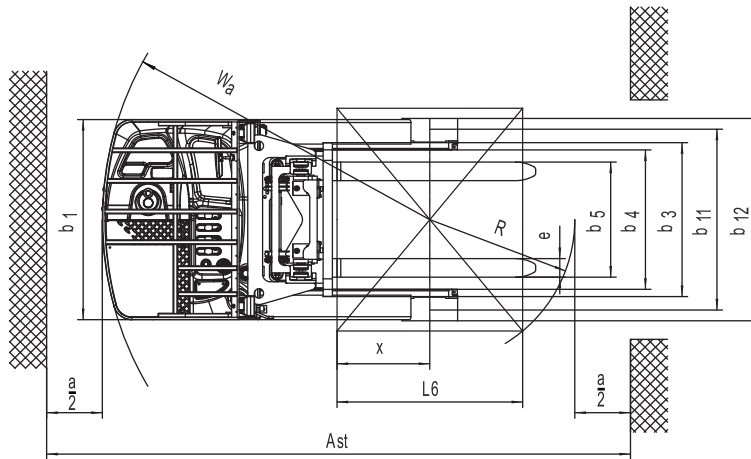
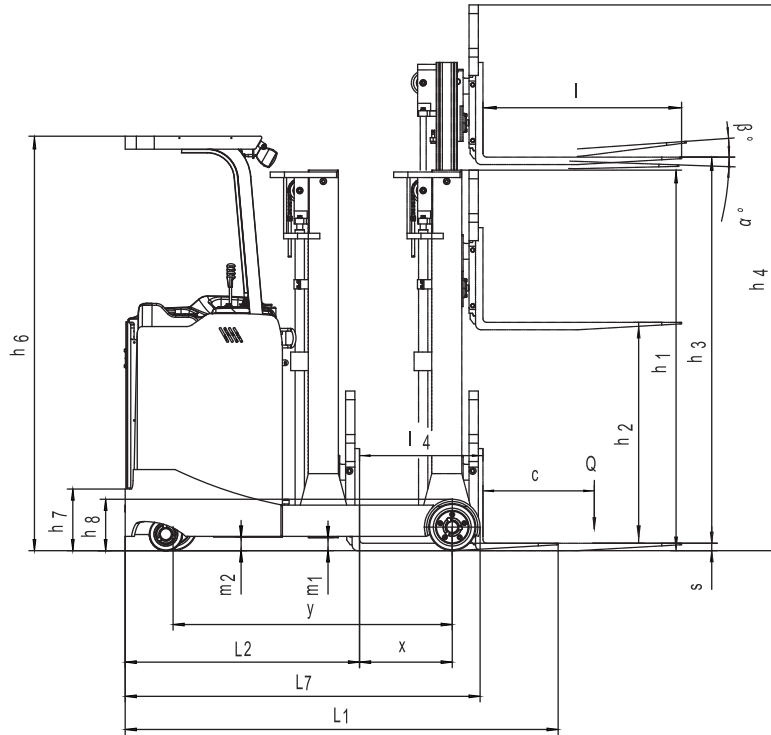
EP EQUIPMENT CO.,LTD

www.ep-ep.com

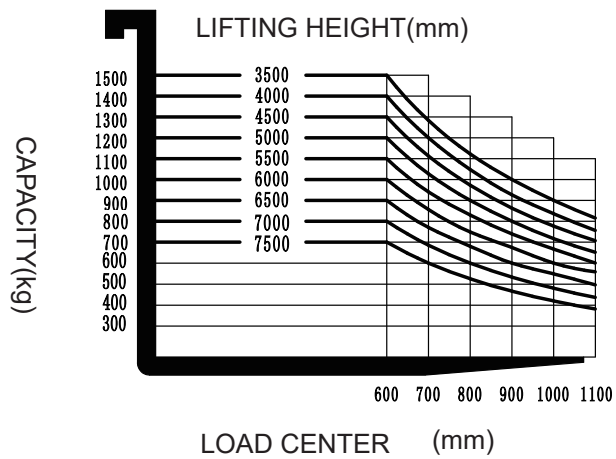
Electric Reach Truck 1.5t CQD15S

Distinguishing mark	1.1	Manufacturer			EP
	1.2	Model designation			CQD15S
	1.3	Drive unit			Electric
	1.4	Operator type			Standing
	1.5	Rated capacity	Q	kg	1500
	1.6	Load center distance	c	mm	600
	1.8	Load distance, centre of drive axle to fork	x	mm	500 ^③
	1.9	Wheelbase	y	mm	1504
	Service weight	2.1	Service weight		kg
2.3.1		Axle loading, unladen front/rear		kg	1621/846
2.4.1		Axle loading, fork advanced, laden front/rear		kg	490/3445
2.5.1		Axle loading, fork retracted, laden front/rear		kg	1510/2416
Tyres/chassis	3.1	Tyre type			Polyurethane
	3.2.1	Tyre size, front		mm	Φ260×105
	3.3.1	Tyre size, rear		mm	Φ254×114
	3.4	Additional wheels		mm	Φ178×73
	3.5.1	Wheels, number front/rear (x=drive wheels)		mm	1x/2
	3.6	Tread, front	b10	mm	700
	3.7	Tread, rear	b11	mm	974
Dimensions	4.1	Tilt of mast/fork carriage forward/backward	α/β	°	2/4
	4.2	Height, mast lowered	h1	mm	2050 ^②
	4.3	Free lift	h2	mm	0 ^②
	4.4	Lift height	h3	mm	3000 ^②
	4.5	Height, mast extended	h4	mm	3860 ^②
	4.7	Height of overhead/ guard cabin	h6	mm	2255
	4.8	Seat height/standing height	h7	mm	335
	4.10	Height of wheel arms	h8	mm	280
	4.19	Overall length	l1	mm	2335 ^③
	4.20	Length to face of forks	l2	mm	1265 ^③
	4.21	Overall width	b1/b2	mm	1078/1090
	4.22	Fork dimensions	s/e/l	mm	40/100/1070
	4.23	A,B Fork carriage class/type A, B			2A
	4.24	Fork carriage width	b3	mm	830
	4.25	Distance between fork-arms	b5	mm	200-620
	4.26	Distance between wheel arms/loading surfaces	b4	mm	750
	4.28	Reach distance	l4	mm	665 ^③
	4.31	Ground clearance, laden, below mast	m1	mm	70
	4.32	Ground clearance, center of wheelbase	m2	mm	70
	4.34.1	Aisle width for pallets 1000×1200 crossways	Ast	mm	2745 ^③
	4.34.2	Aisle width for pallets 800×1200 crossways	Ast	mm	2770 ^③
4.35	Turning radius	Wa	mm	1765	
4.37	Length across wheel arms	l7	mm	1912	
Performance data	5.1	Travel speed, laden/unladen		km/h	8.5/9
	5.2	Lifting speed, laden/unladen		m/s	0.28/0.44
	5.3	Lowering speed, laden/unladen		m/s	0.52/0.48
	5.4	Reaching speed, laden /unladen		m/s	0.1/0.1
	5.8	Max. gradeability, laden/unladen		%	8/10
	5.10	Service brake			Electromagnetic
5.11	Parking brake			Electromagnetic	
Electric-engine	6.1	Drive motor rating S2 60 min		kW	4
	6.2	Lift motor rating at S3 15%		kW	8.2
	6.4	Battery voltage/nominal capacity		V/Ah	48/420
	6.5	Battery weight		kg	739
Addition data	8.1	Type of drive unit			AC
	10.5	Steering design			Electronic
	10.7	Sound pressure level at the driver's ear		dB(A)	75

If there are improvements of technical parameters or configurations, no further notice will be given.
The diagram shown may contain non-standard configurations.



RATED CAPACITIES GRAPH



Mast Option

① Service weight (include battery)

Mast height (mm)	Service weight (kg)
2-stage mast	
2700	2345
3000	2370
3300	2395
3640	2420
4000	2445
4300	2470
3-stage mast	
4000	2510
4500	2540
5000	2570
5500	2600
6000	2630
6500	2660
7000	2650
7500	2680

② Mast

without side shift: 2-stage mast					
Lift height	Lowered mast height	Extended mast height			
h3	h1	h4	h4(*)		
2700	1900	3560	3266		
3000	2050	3860	3566		
3300	2200	4160	3866		
3640	2370	4500	4206		
4000	2550	4860	4566		
4300	2700	5160	4866		
Note: (*) for without backrest					
without side shift: 3-stage mast					
Lift height	Lowered mast height	Free lift		Extended mast height	
h3	h1	h2	h2(*)	h4	h4(*)
4000	1930	1060	1060	4860	4700
4500	2100	1240	1240	5360	5200
5000	2270	1400	1400	5860	5700
5500	2440	1580	1580	6360	6200
6000	2610	1740	1740	6860	6700
6500	2780	1920	1920	7360	7200
7000	2950	2080	2080	7860	7700
7500	3120	2260	2260	8360	8200
Note: (*) for without backrest					

with side shift: 2-stage mast				
Lift height	Lowered mast height	Extended mast height		
h3	h1	h4	h4(*)	
2700	1900	3735	3266	
3000	2050	4035	3566	
3300	2200	4335	3866	
3640	2370	4675	4206	
4000	2550	5035	4566	
4300	2700	5335	4866	
Note: (*) for without backrest				

with side shift: 3-stage mast					
Lift height	Lowered mast height	Free lift		Extended mast height	
h3	h1	h2	h2(*)	h4	h4(*)
4000	1930	895	1060	5035	4700
4500	2100	1065	1240	5535	5200
5000	2270	1235	1400	6035	5700
5500	2440	1405	1580	6535	6200
6000	2610	1575	1740	7035	6700
6500	2780	1745	1920	7535	7200
7000	2950	1915	2054	8035	7700
7500	3120	2085	2234	8535	8200

Note: (*) for without backrest

③Dimensions(mm)

		without side shift		with side shift	
		2-stage mast	3-stage mast	2-stage mast	3-stage mast
Overall length (minimum)	I1	2335	2357	2370	2392
Length to face of forks	I2	1265	1287	1300	1322
Reach distance	I4	665		630	
Aisle width for pallets 1000×1200 crossways	Ast	2745	2760	2763	2783
Aisle width for pallets 800×1200 lenthways	Ast	2770	2790	2801	2820
Aisle width for pallets 1000×1200 lenthways	Ast	2825	2843	2853	2872
Aisle width for pallets 800×1200 crossways	Ast	2635	2645	2651	2662

④Battery

Capacity(Ah)	Battery weight (kg)
300	600
345	560
360	620
420	739
450	739
465	739

Option

Optional items	CQD15S
Driving pedal	—
Electronic Power steering	●
Battery capacity	●420Ah
	○300/345/360/465Ah
Lithium Battery capacity	○260Ah
Lateral change battery	○
Cold storage	○
Side shift	○
Front light and warning light	●
Rearview mirror	●
Hummer	○
Height display	—
Camera	○
Fire extinguisher	○
The front wheel side guard	○
Drive-in Rack	○
Seat switch	—
Water auto-fillingsystem	
Note:	●Standard ○ Optional - Inconformity

